

What to wear?

Auxiliary soldiers wore armour for protection, but they did not have to wear their full armour all the time. It would have been very uncomfortable!

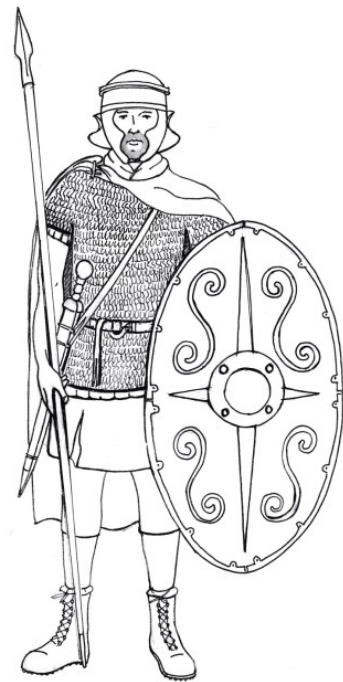
For lighter jobs, called fatigues, they would wear 'soft kit'.



Soft Kit

Undertunic, tunic, trousers, belt, socks, boots.

Cloak (with brooch) worn on cold or wet days.



Full armour

Undertunic, tunic, trousers, scarf, socks, boots,

Padded top, body armour, belt, soft hat, helmet, shield.

Spear, sword, dagger

Cloak with brooch (for night or wet weather duty but not when fighting)

Have a look below at the different jobs an auxiliary soldier might do.

Guard duty at one of the gates to make sure whoever comes in the fort has permission to do so.	Unloading, storing and distributing supplies such as food, drink and firewood from ships or wagons.
Fetching water, boiling it and filling water jugs.	Grinding flour, collecting rations, cooking meals.
Guarding the cattle and horses grazing in fields outside the fort.	Cleaning, polishing and mending armour and equipment and mending boots.
Cleaning and maintaining the fort and barracks. Re-painting buildings, doing minor repairs to buildings and roads, cleaning out drains and latrines.	Guard duty at the shrine of the standards in the headquarters building.
Going on patrol outside the fort.	Cavalry soldier: looking after horse, grooming etc (although the groom, usually a slave would have to do much of that); exercising the off-duty horses to keep them fit.
Attending religious ceremonies.	Cleaning barrack room, sweeping, washing, dusting (every couple of years refill mattresses with new hay or straw), empty chamber pots etc.
Cleaning and maintaining the bath-house.	Night-watch duty: keeping an eye out for anyone creeping up on the fort.

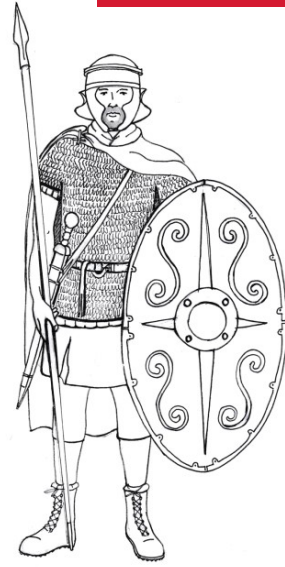
Think about how safe the soldier would be doing these jobs.

Which jobs could he do in soft kit? Which jobs would need full armour?

Cut out the jobs from above and stick them under the right heading below.



Soft Kit



Full armour