

MORTAL  
FOOLS

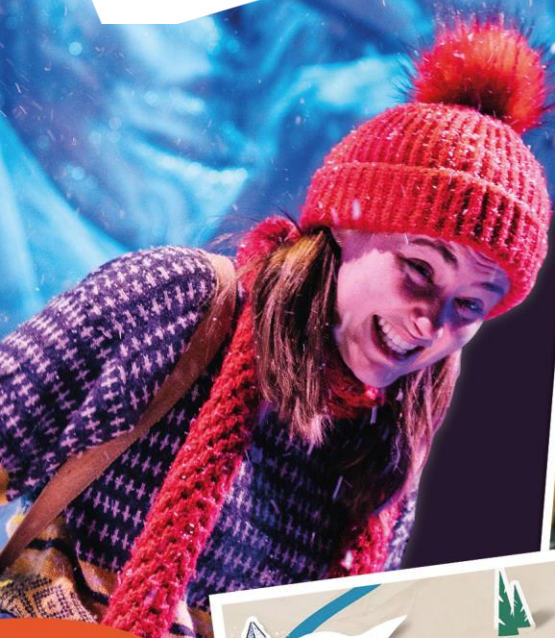


# MELVA

Mental Health and  
Wellbeing Education  
through storytelling

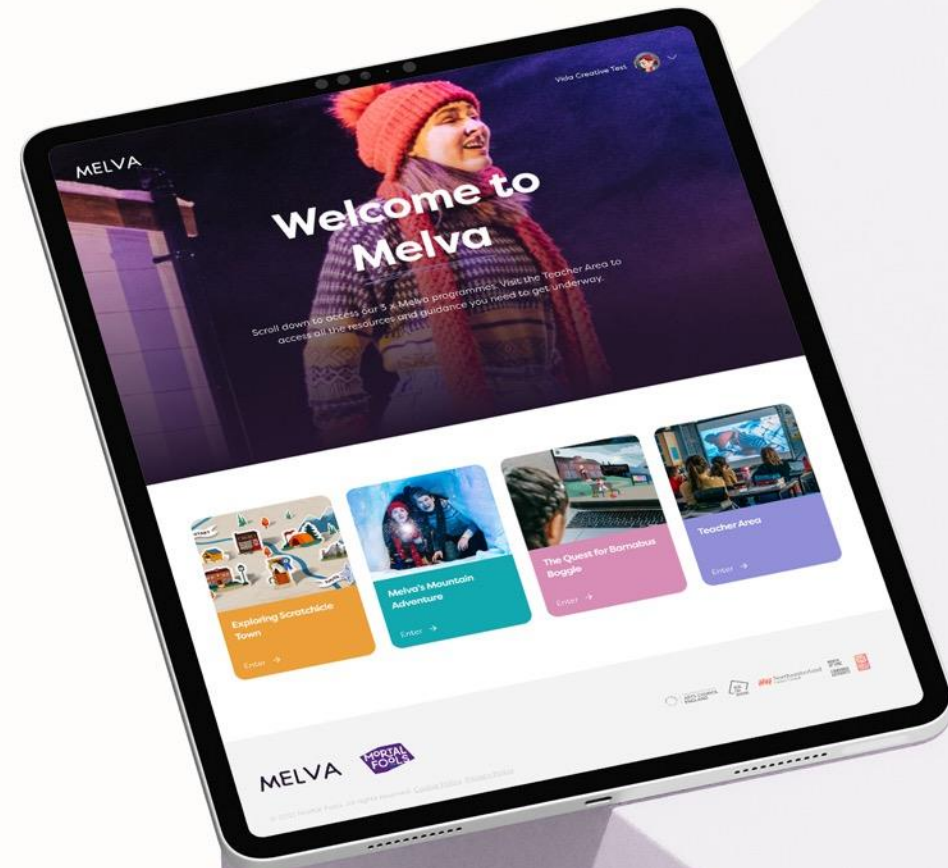


[www.melva.org.uk](http://www.melva.org.uk)





- Aimed predominantly at KS2, with introductory activities for KS1
- Designed to be delivered by staff in school
- Pre-made lesson plans and resources
- Created with **all** children in mind – not just those who are struggling





- **Whole School activities:**

- *KS1 Introductory activities*
- *4 x creative intervention programmes for KS2*
- *Extension materials*

- **Facilitated Teacher CPD**

*including specialist training from professional counsellors*

- **Ongoing support from the MELVA team**

- **Evaluation & Impact Data**





**Children &  
Young People Now  
Awards 2025**

**Finalist**



**The National  
Children & Young People  
Awards**  
CELEBRATING EXCELLENCE IN SOCIAL CARE

**FINALIST**

**2025**



**THE NORTHERN  
CULTURAL EDUCATION AWARDS | 2024**

**FINALIST**



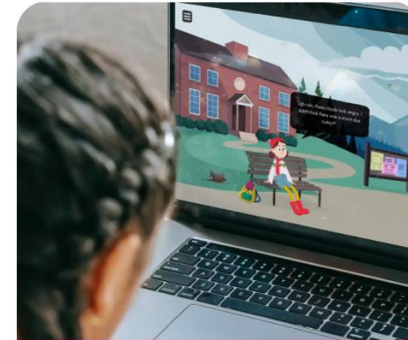
**Exploring Scratchicle  
Town**

Enter →



**Melva's Mountain  
Adventure**

Enter →



**The Quest for Barnabus  
Boggle**

Enter →



**Melva Mapletree and the  
Great Undoing**

Book →



## Teacher Area

Lesson Plans, Resources and Guidance (including KS1 Activities) →





# The story so far:

**Over the last 2 academic years, Melva has:**

Been used in 150+ schools

Supported over 14,000+ children and young people

Provided training to over 140 teachers and school staff

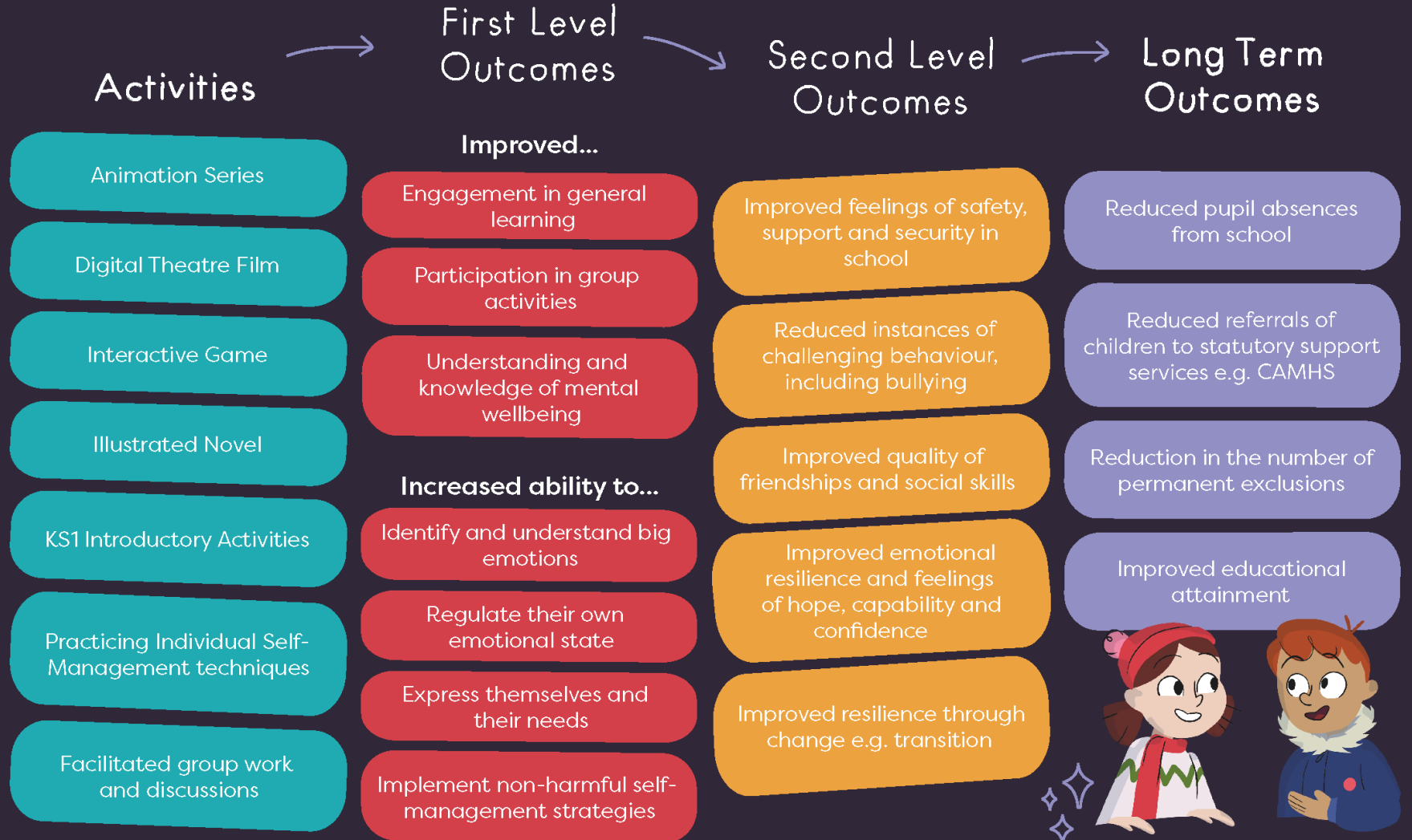






# Impact map for children

MELVA





## Impact map for teachers and practitioners



### Activities

### Initial Outcomes

### Long Term Outcomes

#### Expert led Staff CPD Training in...

Managing their personal resilience and mental wellbeing

Managing challenging behaviour and sensitive conversations

Recognising symptoms and supporting children at risk of self-harm or suicidal ideation

#### And...

Practical training sessions on using the programme resources + ongoing helpline support

Facilitated peer-to-peer practice sharing with other Melva users

Access to creative materials which support a whole school delivery approach

Increased awareness and understanding of their personal mental wellbeing needs

Increased awareness and understanding of the mental wellbeing needs of children

Increased ability and confidence in responding to wide scope of children's mental wellbeing needs

Learned new terminology to support structured and safe conversations about challenging topics

Learned successful approaches from other programme users and new practice-sharing relationships established

Increased confidence in utilising creative activities as tools to support children's mental wellbeing

Reduced time spent dealing with challenging behaviour

Reduced stress of staff, less sick leave and less cover required

Reduced referrals of children to statutory support services e.g. CAMHS

Improved relationships and cohesion across school community

Established regional community of practitioners who are proficient in supporting children with their mental health





# Exercises for You





# Questions?







We have **FREE licences** (worth £1,000 per year) available **NOW** for schools within the North East Combined Authority.

**Register via the website  
to claim yours today!**



[www.melva.org.uk](http://www.melva.org.uk)

[melva@mortalfools.org.uk](mailto:melva@mortalfools.org.uk)